



Waveland Park News

Fall 2020

Free
Walking Tour!
October 3
10-11:30 a.m.

STROLL THROUGH THE PAST INCLUDES CLORIS LEACHMAN'S HOME

When Tanner Kinzler heard someone warble "yoo hoo" at his back gate, he wasn't prepared for the woman who stood in the front yard of his Waveland Park home. The woman standing there, was the legendary actress Cloris Leachman.

"At the time we were not aware that she once lived here," Kinzler said. "I learned about it that afternoon when we heard a 'Yoo hoo. Excuse me,' at the back gate. It was Cloris, wondering if she could come in and take a look around."

The year was 2009 and Cloris was 83 years old. "As far as unexpected visitors go, she was an absolute delight," Kinzler said. "She got on the floor and played with the pets and the kids, played the piano, told stories and signed the 'time capsule' behind the plumbing access door that she remembered. For decades, all the kids who have had the bedroom have signed it and left notes for the future inhabitants."

When Kinzler bought the brick Georgian-style home in 2005, he intended to renovate it and sell it. But then love walked in.

"The architecture firm I hired to help with those renovation plans sent out a talented and beautiful young lady—Emily," Kinzler said. "Long story short, Emily and I started working on two projects together, fell in love, got married and moved into the house. We had children and 15 years later, here we are."



Actress Cloris Leachman once lived in this Waveland Park home near Roosevelt High School.

The home is one of several featured in the first annual Waveland Park Architectural Walking Tours set for Saturday, October 3 from 10 to 11:30 a.m. Architect Tom Wollan will host the sidewalk tour, pointing out exterior points of interest. The tour group meets at the corner of Chamberlain Avenue and California Drive and will wander through that area, moving toward Kingman Boulevard.

Other homes on the tour highlight various architectural styles including Tudor, Cape Cod and brick cottages. One of the Tudor homes once belonged to Iowa's former governor, the late Robert Ray. The homes, built from 1915 through the 1930s, are not far from Roosevelt High School where Cloris Leachman launched her acting career and graduated in 1944. She also performed at the nearby Des Moines Playhouse, as well as Drake University.

Continued on page 2

WPNA BOARD OF DIRECTORS

President: Mark Johnson
pamejohnson83@gmail.com
VP: Jeanne Ambrose
jeanneambrose@me.com
Treasurer: Rich Knapp
Rknapp1103@gmail.com
Secretary: Carole Lunde
carollunde@kw.com

ABOUT THE WPNA

The WPNA is a non-partisan non-profit organization in which all meetings, programs, and events are free and open to the public. It is the purpose of the WPNA to enhance and maintain the quality of life in Waveland Park.

WPNA NEWSLETTER

The WPNA newsletter is the official publication of the Waveland Park Neighborhood Association. For questions, comments, or content submissions, contact: Waveland Park Neighborhood Association, P.O. Box 30112, Des Moines, IA 50310

Web: www.wavelandpark.org
Email: info@wavelandpark.org
Facebook: /WPNAfb
Editor: Jeanne Ambrose
jeanneambrose@me.com
Ad Sales Director: Sherry Borzo
sherry@storiedgifts.com

MEETINGS

Second Monday of every month, 6:30 p.m. For details, check wavelandpark.org or our Facebook page.

ALL ABOARD! TROLLEY MONUMENT PLANNED

With a little side-to-side swaying and a lot of imagination, you might be able to recreate the feeling of riding the old University streetcar when the Waveland Trolley Park project is complete.

The project, in the fundraising phase, will commemorate and preserve the former Waveland Streetcar turnaround on

University Avenue near the entrance to Waveland Golf Course. The plans include an artistic rendering of a streetcar, a small park with benches and educational signage focused on the history of the turnaround, according to Earl Short, who is coordinating the project.

Continued on page 3



Emily Kinzler, left, with Cloris Leachman

If you are participating in the free walking tour, please wear masks and be respectful of private property and mindful of staying on the public sidewalks. For additional tour questions, contact Mark Johnson, president of Waveland Park Neighborhood Association, pamejohnson83@gmail.com.

“A good neighbor increases the value of your property.”
— Czech proverb

COME GROW WITH WAVELAND PARK

Waveland Park Neighborhood is looking for people like you to come grow with us. We’re seeking creatives and hands-on helpers for board positions and association membership.

We encourage all neighbors to join or renew your annual membership this month! Those who do not only will get the benefit of membership through December 2021, but also will be eligible for gift giveaways that support local businesses. These include gift cards from local businesses and Waveland Park Neighborhood signs. We’ll announce winners (picked by random drawing from the list of members who join or renew between Sept. 1 and October 9) at our October 12 annual meeting. The meeting will take place virtually via Zoom.

Why should I care about a thriving neighborhood association?

We represent your collective voice, organized for the mission of promoting the social welfare of our community through charitable, educational, and recreational activities. A strong association helps maintain a strong neighborhood.

What can I do?

The commitment to help the association is small, fun, and exciting. Join the board and offer your creativity and energy to help us with newsletters, membership drives, social media, and events such as the walking tour of homes. We want to hear your voices on areas of interest you might have. Once we are post-Covid, we will revive annual gatherings including the annual Easter Egg Hunt and National Night Out, among others, to encourage pride in the place where we live.

In addition to general members, we also need board members (up to 11 positions) to fill roles, including president, vice president, and secretary, as well as general board slots.

Meeting Information

Monthly meetings are held the second Monday of every month at 6:30 p.m. We’re currently hosting meetings on Zoom. Join us on at our next meeting, September 14, 6:30 p.m. Email Sherry@storiedgifts.com for the Zoom link.

In October, we’ll host our annual meeting on Monday, October 12 at 6:30 p.m. This event will include an informative speaker, gift giveaway drawing for all WPNA members, and voting for the 2021-2023 board and officers.

Join WPNA Today! Members Make a Difference

Help keep our neighborhood beautiful and thriving by participating in the Waveland Park Neighborhood Association (WPNA). If you’ve participated in our events, enjoy receiving this newsletter, or want to help maintain our beautiful neighborhood, please join the WPNA. Annual dues provide membership from January 1 to December 31.

There’s still time to become a member and support the newsletter and other activities that we hope to continue when the Covid-19 situation settles down. Even though dues are not prorated throughout the calendar year, becoming a member is still a bargain, no matter when you join!

NAME(S) _____

ADDRESS _____

CITY _____ ZIP _____

PHONE _____

E-MAIL _____

COMPANY NAME _____
(For Business Membership)

MEMBERSHIP LEVELS

Note: Waveland Park Neighborhood Association is a nonprofit organization. Your membership may be tax deductible and could be eligible for a matching gift from your employer.

- Renewal
- New Membership

- \$15.00 Individual/Family Membership
- \$50.00 Business Membership

EXTRA! Waveland Park Neighborhood Association Sign

- \$35

You may also purchase the Special Waveland Park Neighborhood sign for only \$35. The eight-inch round sign is weather-resistant and perfect to hang outdoors—or indoors, too.

PAYMENT INFORMATION

Please make checks payable to WPNA and mail to:

WPNA P.O. Box 30112
Des Moines, IA 50310

OR

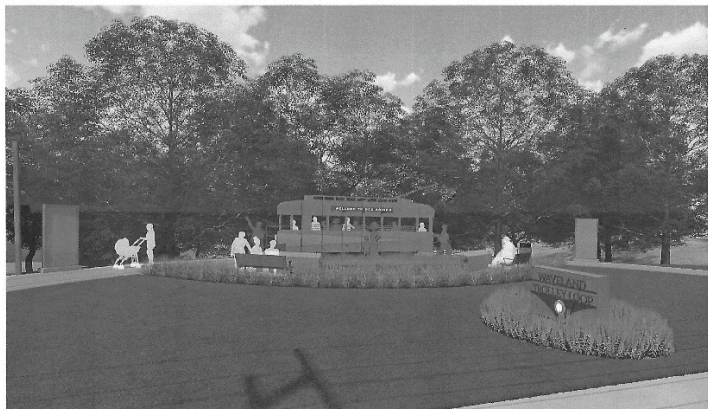
Payment via PayPal also is available online at www.wavelandpark.org under the MEMBERSHIP tab. Please include your name, address, and email as a NOTE attached to your PayPal payment.

All Aboard, continued from page 1

The turnaround loop was originally built in 1901 to bring golfers to the Waveland Golf Course. As the area grew, the streetcar was used by residents as well.

Short, whose father was a streetcar motorman in Des Moines in the early 1900s, remembers riding the trolley to the turnaround. "That's what started my interest to begin with," he said. "I was going to put together a little album and dedicate it to my father. It kind of mushroomed from there."

Since then, he has launched the Des Moines Streetcar Friends and has been working to get the memorial trolley turnaround built. The project has received approvals to put the trolley loop on a Landmark Preservation List by Des Moines Planning and Zoning Committee, Des Moines Landmark Review Board and Des Moines City Council. The Waveland Park Neighborhood Association Board also supports the project, as well as the Des Moines Historical Society. Shive-Hattery Architecture and Engineering firm also is participating in the project.



WAVELAND TROLLEY LOOP ART INSTALLATION & EXHIBIT
UNIVERSITY AVENUE | CITY OF DES MOINES | DSM STREETCAR FRIENDS

SHIVEHATTERY
ARCHITECTURE & ENGINEERING

An anonymous donor has agreed to match donations, up to \$1,000, collected by Waveland Park Neighborhood Association for the trolley project if we can raise \$1,000 by September 30. Come on neighbors! Let's see if we can meet that deadline to earn that additional \$1,000 match for the project. Donations qualify as a tax-deductible contribution.

Total project cost is estimated to be about \$214,000, Short said. About \$150,000 has been raised so far. Additional funds are needed for maintenance and upkeep.

Q&A WITH OFFICER TRUDY PAULSON

Officer Trudy Paulson, who has a degree in criminal justice, joined the Des Moines Police Department in 2009. She serves in the Neighborhood Based Service Delivery Unit focusing on Waveland Park, Beavertdale as well as nearby communities.

Q: What is your role in Waveland Park?

A: My main role is to help build the bridge between the community and the police, specifically helping citizens feel safe in the neighborhood where they live. Each day is different. One minute I could be attending community events and the next I could be responding to 911 calls.

Q: #1 crime committed in Waveland Park?

A: Waveland Park in general is a very quiet neighborhood and crimes seem to be "crimes of opportunity." I would advise everyone to keep their doors locked, garage doors closed, and to report any suspicious activity. As a reminder, if you leave for vacation you can always request extra patrol through the police department.

Q: What is your favorite part of the job?

A: My favorite part of my current job is teaming up with community members. I'm able to spend more time with people and help resolve situations as a team.

Q: Do you have pets?

A: I have a dog named Aubrey; two cats, Taylor and Sophia; and a fish named Stew.

Q: What's the most common question you get asked by kids?

A: A common question kids will ask: "What's all on your belt?" It weighs about 25 pounds. When asked, I will go through each item and share with them it is and what it's used for.

PLEASE DONATE

(Your donation is tax deductible through WPNA's 501.c.3 designation)

NAME _____

ADDRESS _____

City _____ Zip _____

Phone _____

Enclosed is my donation of: \$25 _____ \$50 _____
\$100 _____ Other _____

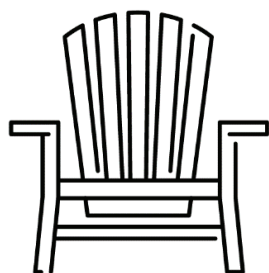
Please make checks payable to WPNA and mail to:

WPNA
P.O. Box 30112
Des Moines, IA 50310

note on your check: For Streetcar Project

OR

Contribution via PayPal also is available online at www.wavelandpark.org under the DONATE tab. Please include your name, address, and NOTE that says, "For Streetcar Project," attached to your PayPal payment.



**CHAIRMAN
OF THE
BOARD**

"Leisure Chairs for
the Garden & Porch"

(515)277-3052

MARK ELIECK JOHNSON



**Josephsen
Customs**

Commission a custom watercolor featuring your favorite view of your home inside the iconic Waveland Park Neighborhood logo.

Visit josephsencustoms.com to see other works and to place an order!

 [josephsencustoms](https://www.instagram.com/josephsencustoms)

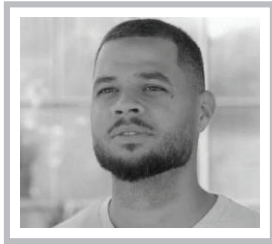
NEW MURAL OFFERS INSPIRING WORDS

An effort to bring “a sense of cohesion” to the neighborhood resulted in plans to create two murals in the area. The first mural, recently completed, is a quote from Malcolm X that reads: “Education is the passport to the future, for tomorrow belongs to those who prepare for it today.”

The mural, on the wall outside Universal Barbershop on the corner of University Avenue and 48th Street, was created by Jordan Weber, Waveland Park resident known for his artwork that often doubles as statements of activism.

“When I was approached about painting an empowerment mural in the neighborhood, I talked with the owner and barbers of the barbershop and we vetted about 15 different quotes. All of the barbers came together and picked this one,” Weber said.

The quote was chosen because of how well it tied in with the adjacent little free library and seating area.

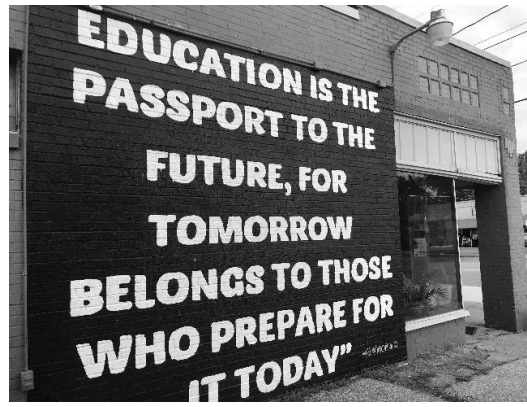


*Jordan Weber,
artist and
activist*

“I do public activations,” Weber said. “I think murals need to involve more than just the visual. They need to have a utilitarian element in order to have a long-term outreach into the community.” That’s why Weber wanted to also build the little free library and the benches right in front of the inspirational mural.

The goal is to support black-owned businesses and to focus on collecting and offering books by and about black, brown and indigenous people, Weber said, particularly geared toward youth. Book donations can be dropped off at Universal Barbershop, 4719 University Ave.

The mural project was made possible by a collaboration between Franklin Area Neighbors and Invest DSM. The second mural is planned to be installed on a wall at the Price Chopper on Beaver Avenue.



A quote from Malcolm X towers over two benches and a little free library on the wall of Universal Barbershop.

Promote Your Business to Your Neighbors!

This newsletter is published three times a year (Spring, Summer, Fall) by the Waveland Park Neighborhood Association (WPNA). Each issue is delivered to more than 1,200 homes plus businesses in Waveland Park. It’s the only publication that reaches all households in the neighborhood. If you would like to become an advertising sponsor or have special promotional needs, let us know how we can help!

Contact: Ad Sales Director Sherry Borzo
sherry@storiedgifts.com
2020 Advertising Deadline

SPRING ISSUE DATE: March 8, 2021
ADS DUE: February 1, 2021

AD SUBMISSION REQUIREMENTS

- Accepted file formats preferred: PDF, JPG, TIFF
- All advertising files will be converted to B&W or grayscale for printing

RATES and SIZES

Ad Size	Price	Dimensions
Full page	\$400	8” wide x 10 ½” high
½-page horizontal	\$200	8” wide x 5 ½” high
½-page vertical	\$200	3 ¾” wide x 10½” high
¼-page horizontal	\$100	8” wide x 2½” high
¼-page vertical	\$100	3¾” wide x 5 ½” high
1/8-page horizontal	\$50	3¾” wide x 2½” high

ASK US ABOUT SPECIAL SPONSORSHIP OPPORTUNITIES

- Discounts for multiple ads per year
- Special opportunities for WPNA business members
- Advertorials to include newsletter content/stories directly related to your business

Share Your Stories

Got events, news, or a historic home to brag about? Email jeanneambrose@me.com. Deadline for next issue is February 1, 2021.

**NEW NEIGHBORHOOD BAR & RESTAURANT
EAST OF DRAKE UNIVERSITY!**

LUCKY HORSE

BEER & BURGERS

LUCKYHORSEDSM.COM
2331 UNIVERSITY AVENUE, DES MOINES

